



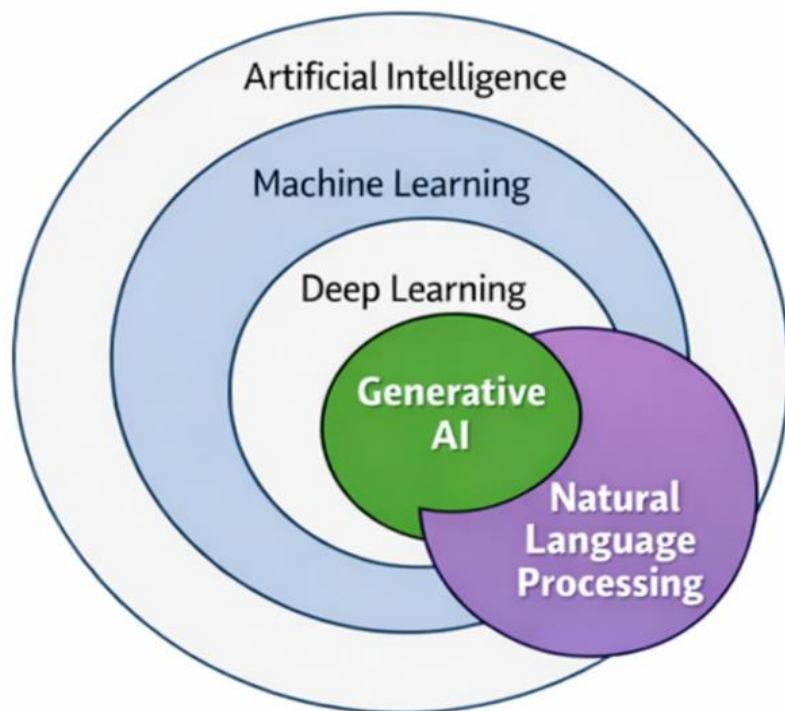
The Norwegian
Tax Administration

AI Governance in risk analysis: Transparency, fairness, security and regulatory compliance.

Kevin McGillivray, PhD.

Data Protection Officer (DPO), Norwegian Tax Administration

IOTA 09.04.2026



- **Artificial Intelligence:** Machines that can simulate human intelligence
- **Machine Learning:** Mimics the way humans learn gradually through experience
- **Deep Learning:** An advanced form of machine learning using neural networks with many layers to analyze data
- **Natural Language Processing:** Enables interaction between computers and humans through natural language
- **Generative AI:** Can create entirely new text, images, and sound

Source (translated by Copilot: [Teknologirådet, Generativ kunstig intelligens i Norge](#))

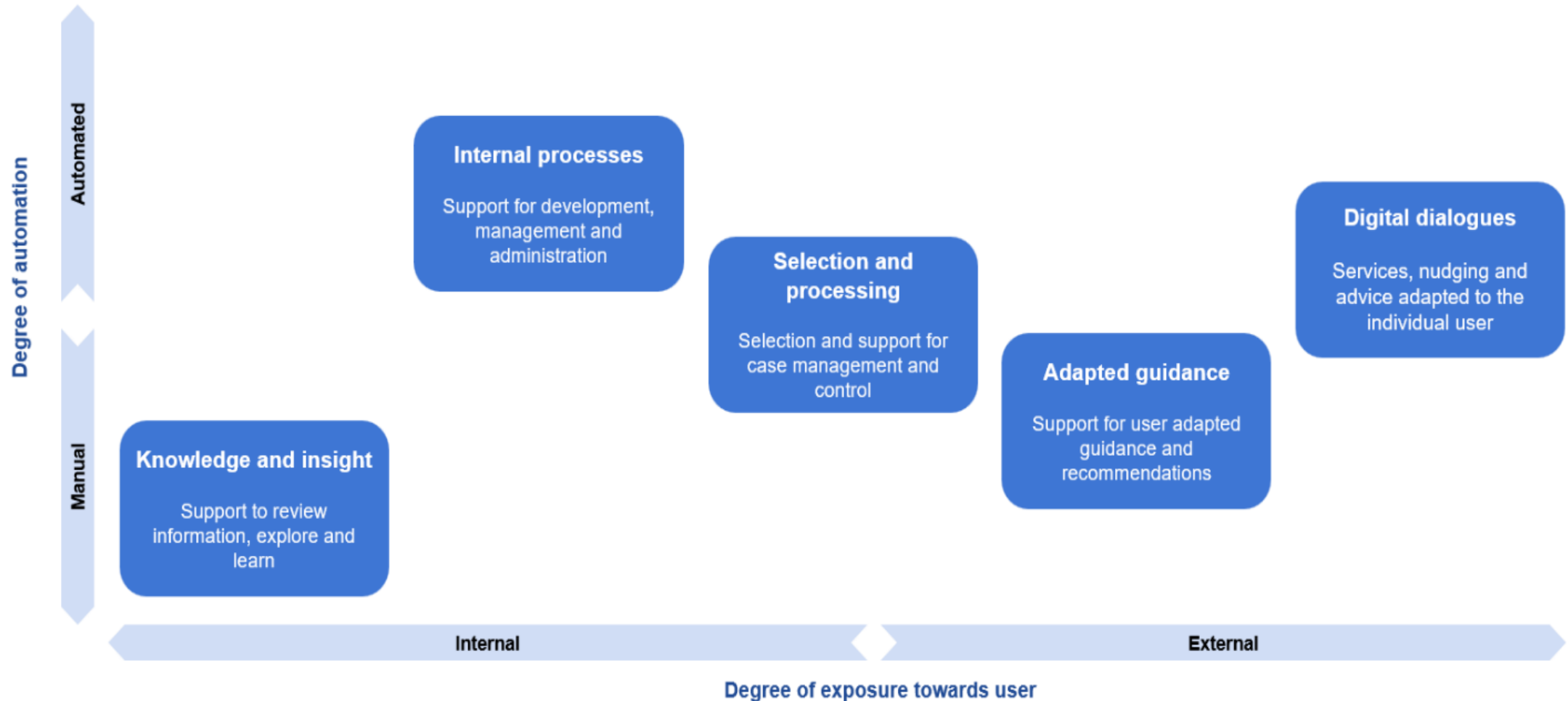
From Strategy and Long-Term Plan – Towards 2030

We will use data, analytics, and artificial intelligence at scale in our operations

We will use data, analyses, and artificial intelligence on a large scale in task solving



Use of AI in solving tasks





The Norwegian
Technology Association

Continue to build on areas where we already have expertise

- Further development and use of “classical AI”: pattern recognition and specialised models in projects and line operations
- Established data and analytics platform
- Advanced and expanded use of machine learning (ML++)




Experimenting with the New

- Generative AI, GPT and similar tools
- Hands-on experience building through real use cases and interfaces with rules and policy
- Identifying new types of competence
- Ensuring transparency to enable learning
- Prioritising resources and budgets for new AI activities based on ambition level







 **Databricks Assistant**
Your context-aware AI assistant



Azure AI services

 |  **OpenAI**



GitHub Copilot

 **AI/BI Genie**
For a deeper dialogue with your data

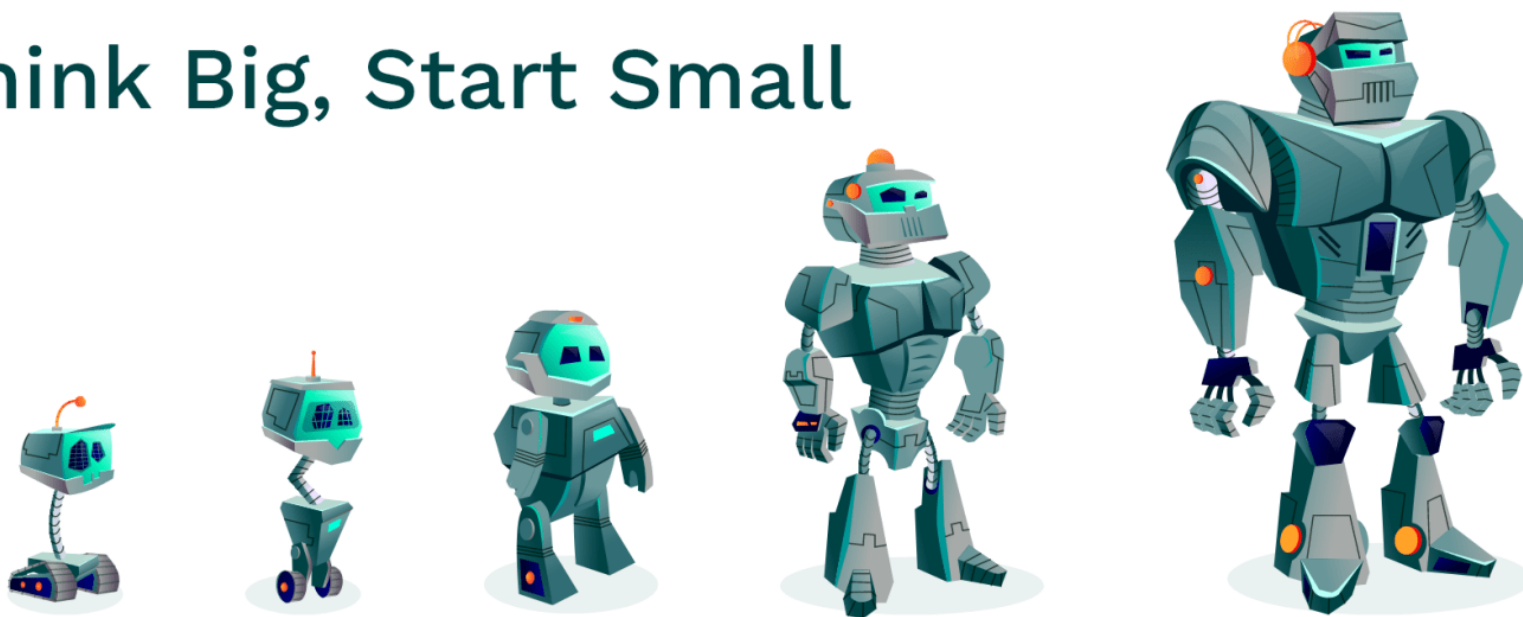


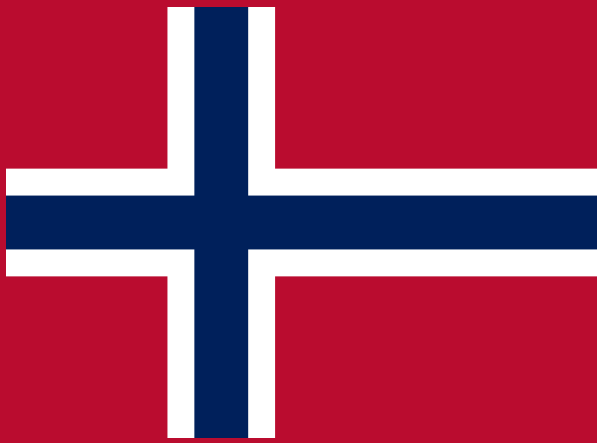
Copilot

HVA?

SkattGPT

Think Big, Start Small





- The Constitution
- Public Administration Regulations
- Data Protection Legislation
- The Equality and Anti-Discrimination Act
- The Copyright Act



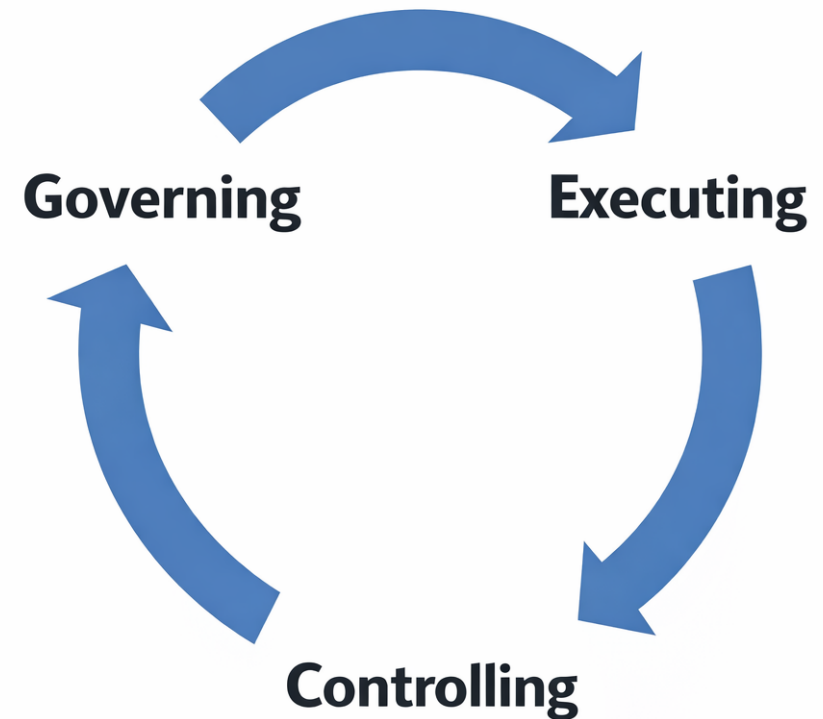
- General Data Protection Regulation (GDPR)
- Digital Services Act (DSA)
- Digital Markets Act (DMA)
- Data Act
- Data Governance Act
- European Convention on Human Rights (ECHR)



- Ethical Guidelines
- Strategy
- Governance
- Procedures and Guidelines
- Security obligations
- Policy for the Development and Use of Artificial Intelligence (AI)

Internal control

- **1) Governing elements:**
Management decisions, objectives, expectations and guidance
- **2) Executing elements:**
Day-to-day routines and procedures carried out by employees.
- **3) Controlling elements:**
Monitoring, reviews, and follow-up to identify and address deviations.



A woman with long dark hair is shown in profile on the left side of the image, looking towards three glowing spheres. The spheres are arranged vertically and emit a red, yellow, and cyan light respectively. The background is dark, making the glowing spheres stand out.

Principles for the development and use of AI in the Tax Administration

1. Responsibility
2. Transparency
3. Fairness
4. Technical robustness, security and preparedness
5. Data governance and privacy

Approach: The principles must be designed in a way that allows them to be applied to all AI-based technology while also having a normative effect. The principles must be enduring over time.

Obligations: Provides direct obligations (DPIA etc.)

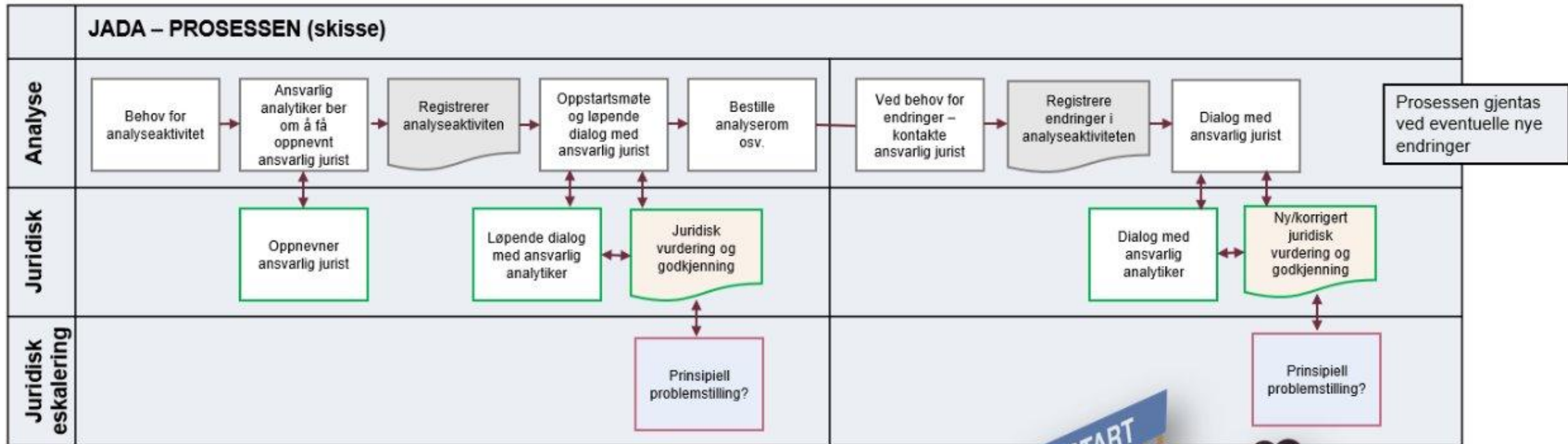
Technical Requirements

- Maximum weight: 70 kg
- Maximum speed: 20 km/h
- Brakes
- Red reflector / Lights / Bell
- Electrical system must be CE-certified

Requirements for Use

- Minimum age 12 years
- Helmet mandatory under 15 years
- No passengers allowed
- Blood alcohol limit 0.2



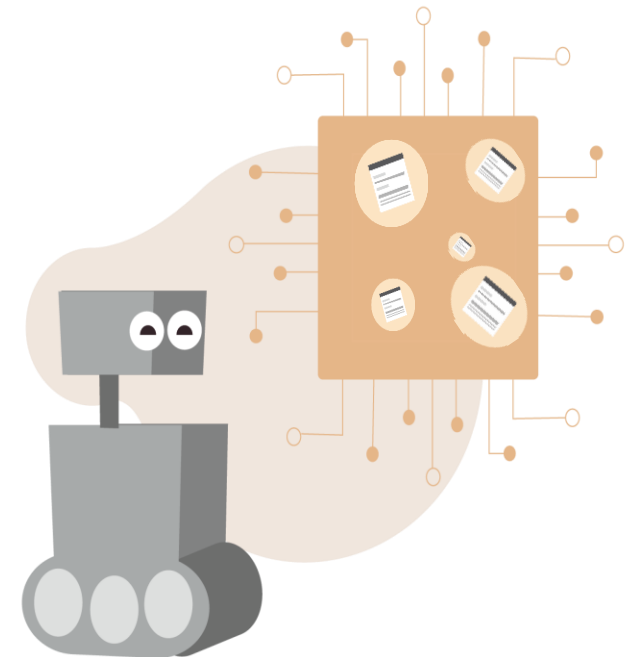


AI Realisation Team (1)

Support and Delivery of AI Initiatives

- Provide AI expertise, including advice on model selection and solution design, drawing on experience from previous experiments.
- Contribute to decision-making material, including **risk assessments (ROS)**, **privacy impact assessments (DPIA)**, and security assessments.
- Support successful AI initiatives through prioritisation and transition to production.

The team combines competencies across IT, legal, security, change management, and analytical domains.





The Norwegian Tax Administration

Forretningsmodell Canvas

Område/prod
Eier:



Introduksjon - start her

P



1. Hva er kunstig intelligens? (10 min)



2. Hva er en språkmodell? (15 min)



3. Prompting og dialog med KI-assistenter (20 min)



4. Introduksjon til SK (10 min)



5. Introduksjon til generativ KI | Læringsplattformen



6. Hvordan påvirker ny teknologi og kunstig intelligen...



7. Kunstig intelligens på arbeidsplassen (1 t 30 min)



8. Derfor er psykologisk trygghet viktig for K...

Litt mer teknisk

C



9. KI-assistenter i arbeidslivet (50 min)



10. Tech-frokost: KI i Oljefondet (opptak 1 t)



11. Hva er digital forestillingsevne? (20 min)



12. Tech-frokost: Digital forestillingsevne (1 t)

Ansvarlig og etisk bruk av KI



13. Ansvarlig bruk av KI-assistenter (20 min)



14. Kunstig intelligens i et bærekraftsperspektiv (20 min)



15. Hva er KI-forordningen (AI Act)?

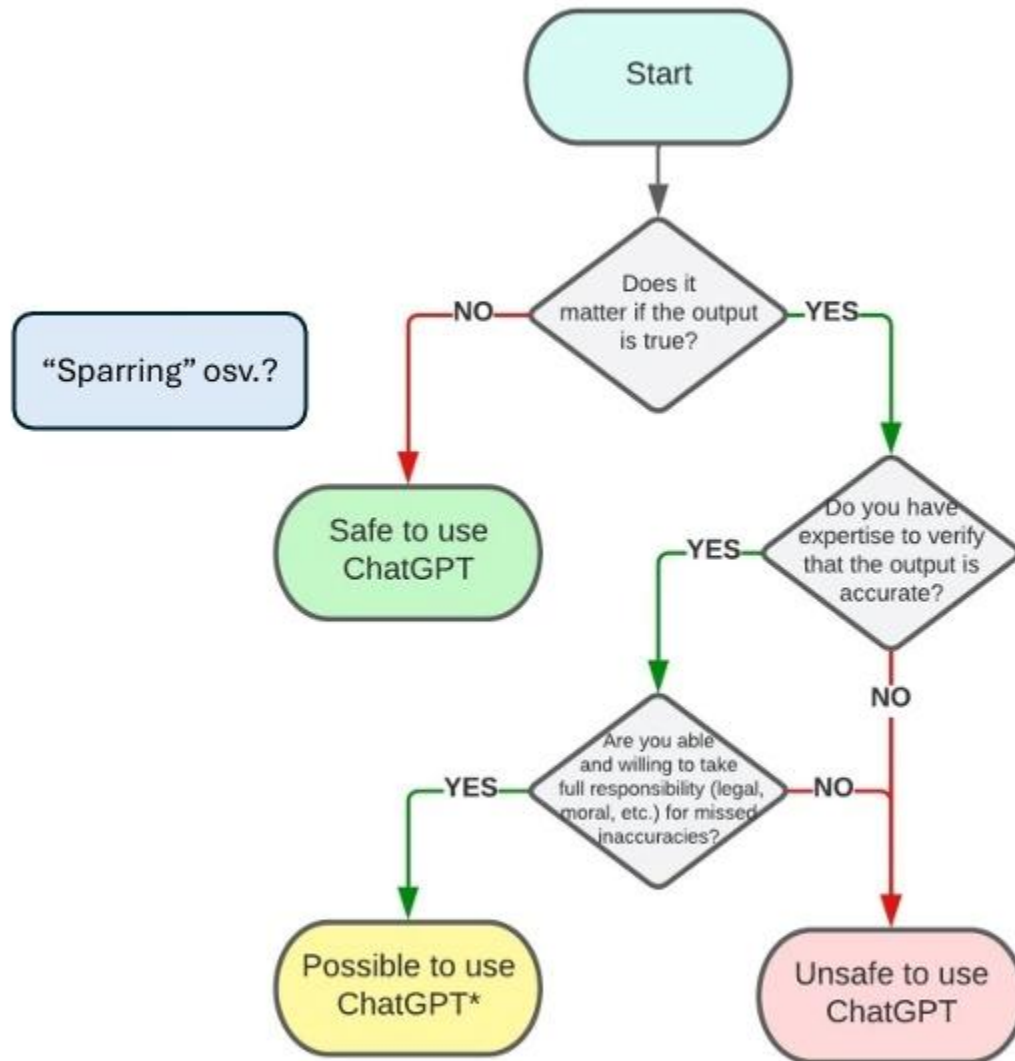


16. Seth Godin: Why Humanity Matters



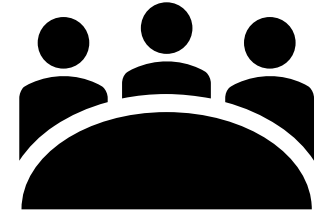
Is it safe to use ChatGPT for your task?

Aleksandr Tiulkanov | January 19, 2023



* but be sure to verify each output word and sentence for accuracy and common sense

Council for Responsible AI



Key Responsibilities

- Provide advice and decision support on legal, technical, and security-related matters for new AI initiatives.
- Receive and assess qualified AI initiative proposals from various internal sources.
- Develop templates for documentation of AI systems subject to review by the council.
- Document, archive, and ensure accessibility of the council's assessments and recommendations.
- Contribute to organisational awareness and knowledge-building related to responsible AI use.

***The Norwegian Tax Administration's data is logically isolated from other customers and users.**

The Norwegian Tax Administration's data is not used for training, improving, or developing AI models, AI functionality, or underlying models.

Third parties are not granted access to the Norwegian Tax Administration's data.

The service provider is not granted new or extended access to the Norwegian Tax Administration's data.



Questions?

